



March 2017 Newsletter

Hours: Mon., Tues., Wed., Fri. 9-5;
Thur. 9-7; Sat. 9-3; Closed Sunday

SINCE 1981

Good morning!

Temperature this morning shows 25, but forecast says warmer weather coming. Had a beautiful snow yesterday morning and still shows at some spots.



Harvey left for Wakarusa, IN early this morning for a product growers meeting. He was asked to come and talk about growing green house tomatoes on soil fertility, amentments & watering, and grading tomatoes for market. So he decided this is a good time to also deliver a load of compost & oxidate, which was ordered, then spend the night at daughter, Darlene & Husband, in Goshen.

Today the boys are logging more ash trees since ground is frozen and it might be their last chance before the Emerald Ash Bore claims them all. They will have a few days work here on the home farm. The lumber used to go for railroad ties, but with the ash bore damage it now goes for blocking lumber (pallets, etc.). Later this spring plans are to do the farm in Lucas since those trees are further south they are not damaged as hard yet. The ash bore moved in from the northwest, eventually killing all the ash trees.



You ladies who like to do flower shopping in this area, I hear little birdies chirping, most green houses are heated and flowers are growing! Local greenhouses in this area will open mid to late April. Our green house will not be nice and warm this spring.

After 17 years of growing melons, Harvey finally made a decision not to grow any product or cantaloupes this year. Was a hard decision as he said he enjoyed every year of it, but his boys are all married and gone, and have their own projects. So he will keep busy helping with farming, feeding cattle, and making compost. He will still be handling southern produce: peaches, cantaloupes, and watermelons.

To those who remember the old store: in a few weeks that will be gone. Son, Melvin, and his crew will tear it down and at some time make a few changes and reside the house. The original part of old store will stay the same, as tht is the part Son, Wilson and family live in. It's hard to believe it was 29 years with the store being here on the farm. Lots of good memories and some not so good. To our true and faithful customers that's why we are still in business.

Gardening is just around the corner, my mom always planted her sugar peas in later part of February or beginning of March. Some years they even got a blanket snow over top and was OK as they like an early start.

Pig stomach is on the menu for tonight, haven't had any in a few years. This is a specialty passed on by my mother-in-law. I filled it with dressing (prefried), smoked sausage, diced potatoes, and peas. Stuff it, sew it shut and bake a few hours on a low temp. Slice and enjoy! In my growing up years we did not butcher pigs, but we ate tripe, which was from a beef. We'd roll it up and tie it together, boil it till soft. That lasted for quite a few meals. Mom chopped it up and put it in milk based soup. Delicious!



Anniversary Sale is coming close. NEW fabrics coming in daily. Also we bought someone else's inventory with 1,000 plus yards of quilters fabric (flat folds) and many quilt kits that will all be on clearance tables.

Hope to see you and Happy Easter!

Rachel & Girls

Country Fabrics is not responsible for errors due to misprints.

Country Fabrics

6142 Ganges 5 Points Road
Shiloh, OH 44878

CLOSED: APRIL 14 - GOOD FRIDAY
MAY 25 - ASCENSION DAY

INSIDE

36TH

• ANNIVERSARY SALE

Lunch served at Country Fabrics

• 8TH ANNUAL SHOP-HOP

Rice Pizza

Ingredients

- | | |
|------------------------|-----------------------------|
| 3 c. cooked rice | 1 1/2 lb. fried hamburger |
| 1 (8 oz.) cream cheese | 1 qt. pizza sauce |
| 1 c. sour cream | mozzarella cheese, shredded |
| | toppings of your choice: |
| | pepperoni, mushrooms, |
| | peppers & black olives |

Directions

- Mix rice, cream cheese and sour cream together; put in bottom of 9x13 pan
- Fry hamburger and put on top of rice mixture.
- Pour pizza sauce over all and add toppings.
- Bake at 350 for 45 minutes.
- Top with cheese and bake another 15 minutes.
- Enjoy!

Bean Cake

Cake

Ingredients

- 1 1/2 c cooked dry beans or canned beans, rinsed
- 5 eggs
- 1/2 c. honey
- 1/2 tsp. salt
- 3/4 tsp. baking soda
- 1 Tbsp. vanilla
- 6 Tbsp. melted butter
- 6 Tbsp. cocoa
- 1 Tbsp. water

Directions

- Blend all ingredients in blender til smooth
- Pour into a 9x9 or 8x11 baking dish
- Bake at 350 for 30 minutes or until done

Icing

Ingredients

- 3/4 block, cream cheese
- 1 Tbsp. maple syrup

Directions

- Mix ingredients til smooth and spreadable
- Spread icing over top cake.

A high protein and low carb cake. This recipe comes from Argentina.

ANNIVERSARY

**COUNTRY
FABRICS**

SALE

10%

**DISCOUNT
STOREWIDE**
excludes sale priced items

MARCH 21-25

OUR FIND IS YOUR *treasure*

1,000 plus yards of Quilting Fabrics - flat fold

\$2.98/yd no cuts | **\$3.98/yd** we cut

• QUILT KITS } **50% OFF**
• QUILT BOOKS } **regular price**
(select items)

BATTING

- | | | |
|----------------|-------------------|--|
| • Dream Cotton | • Mountain Mist | <i>Also</i>
Bulk Rolls available
96"x50yds - Quilt Weight
96"x35yds - Comfort Weight
55"x35yds - Comfort Weight |
| • Dream Poly | • Black Poly | |
| • Quilt King | • Quilters Choice | |
| | | |

Clearance Table

- | | |
|-----------------------|-----------------------------|
| • Tropical Breeze | } \$2.98
per yard |
| • Poly-Cotton | |
| • 100% Polyester | |
| • Misc. Dress Fabrics | |

ALL QUILTS *any size*

Unquilted quilt tops,
wall hangings or laps

10% DISCOUNT
March 21-25

LUNCH AT COUNTRY FABRICS

Lunch will be served at Country Fabrics in classrooms from 11am – 2pm. By donation. Large groups, please reserve a week in advance.

Tuesday

Dinner Rolls
Chicken
Potatoes
Noodles
Peas & Carrots
Gravy

Coleslaw
Red Beet Eggs

Fruit Pizza
Oreo Dessert

Wednesday

Dinner Rolls
Sliced Ham
Potatoes
Noodles
Green Beans
Gravy

Lettuce Salad
Red Beet Eggs

Pies
Ice Cream

Thursday

Dinner Rolls
Meatloaf
Potatoes
Noodles
Peas & Carrots
Gravy

Coleslaw
Red Beet Eggs

Fruit Pizza
Oreo Dessert

Friday

Dinner Rolls
Hamballs
Potatoes
Noodles
Green Beans
Gravy

Lettuce Salad
Red Beet Eggs

Pies
Ice Cream

Saturday

Dinner Rolls
Turkey Breast
Potatoes
Noodles
Peas & Carrots
Gravy

Coleslaw
Red Beet Eggs

Fruit Pizza
Oreo Dessert

8TH ANNUAL

\$25

GIFT CARDS

SPRING SHOP HOP

MARCH 21-25, 2017

SHOP HOP
PASSPORT

7 PARTICIPATING SHILOH STORES!

Pick up your passport at the first store you visit and have it stamped at each of the seven participating stores listed below. Then leave it at the last shop to be qualified for the drawing of fourteen \$25 Gift Cards.

Winners may use at the store of your choice.

**Special Sale Prices,
Refreshments & Giveaways**

And much more at each
participating location listed below.

Carpool & Enjoy the day!

Lunch will be served at Country Fabrics
(in the classroom) 11AM-2PM. By donation.

LARGE GROUPS: Please make reservations.

OVER
10,000 Bolts
of Fabric
In-Stock

Country Fabrics

36th Anniversary Sale

10% OFF STOREWIDE

(excludes sale priced items)

Our Find Is Your Treasure - A 1000+ yards Quilting Fabric

Flat Folds • \$2.98/yd - no cuts • \$3.98/yd - we cut

Large variety quilt kits & quilt books • 50% OFF reg. price

6142 Ganges 5 Points Rd. • Shiloh • 419-896-3785

It's Worth
the Drive!

CORNERSTONE
MERCHANDISE

Mon.-Fri. 8-5; Sat. 8-2

7316 Amstutz Rd., Shiloh

419-896-2110

PAPER BAG SALE! 15% OFF!

Dairy Supplies • Farm Supplies • Animal Health • Animal Feed •
Hardware • Plumbing • Footwear for Men, Women and Children •
Clothing • Housewares • Fabric • Gift Items • Toys & More!

Everything
that fits in a
16"x12"x6"
bag!

SPIRAL
CUT
HAMS



NEWSWANGER MEATS

1585 ST. RT. 603, SHILOH 419-896-3902

OUR OWN FRESH
BEEF, PORK & CHICKEN
Smoked Meats-Bacon, Ham,
Hot Dogs, Bratwursts,

TRAEGER GRILLS &
GRILLING PELLETS IN STOCK!

MON-FRI 8-5 / SAT 8-3

Blooming Grove Sewing LLC

B765 SPECIAL EDITION

Buy this machine and choose your FREE GIFT valued up to
\$2000: Embroidery Module, Bernina 300 or Quilter's Kit!

10% OFF PRESSER FEET 0% INTEREST
NEW SERGER B44 \$399 48 Months

• We service all makes • Oak Sewing Cabinets
7187 Amstutz Rd., Shiloh 419-896-2982

BERNINA[®] Authorized
made to create Dealer



Clothing
Footwear
Toys
Kitchenware
Lifetime Tables & Chairs

Mon.-Fri 9-5
Sat. 9-2

CountyLine Store LLC

We've got you covered!
2465 Baseline Rd., Shiloh

419-896-3003

10% OFF Storewide
(excluding Lifetime Products & Greenhouse Supplies)

Choose from more than 200 kinds of deli meats & cheese

Planktown Country Market LLC

1921 Free Rd., Shiloh
419-896-3525

OUR 18TH
ANNIVERSARY

New & Sale Items | Bulk Foods | FREE GIFT with \$10 Purchase

Open Mon.-Thurs. 8-5 / Fri. 8-6 / Sat. 8-3

PLANKTOWN HARDWARE & MORE

DOOR PRIZES • SPECIAL SALES

Free Gift with \$5 Purchase • Essential Oils & Diffusers • Loose Leaf
Teas • Lodge Cast Iron • Bird Feeders & Pet Supplies • Solar Lights &
Edenpure Heaters & SO MUCH MORE!

DRY SKIN? All Natural Lotions & Soaps

8117 Planktown N. Road, Shiloh | 419-896-3581 M-F 9-6 | Sat 9-5

planktownhardware.com



TRUE SHARP Power Rotary Blade Sharpener

Sharpen your blade with the push of a button!

- Sharpens blades of most brands
- Sharpens blades of 28x 45, or 60 mm
- Sharpens both sides of blade at same time
- Fine-grit stones for everyday sharpening
- Coarse-grit stones for extra dull blades



SPRAY N BOND

Fusible Adhesive

- Machine Washable & Dry Cleanable
- Odorless
- Heat Activated
- Great for Appliques, Home Decor, Patches, and Crafts



SPRAY N BOND

Basting Adhesive

- Eliminates Pinning
- Odorless & Colorless Spray
- Will not gum up needles
- Great for Sewing, Quilting, Embroidery, Pattern Piecing, and Crafts



INCRED-A-SOIL

OUR COMPOST is made from live-stock manure and carbons (contains: straw, leaves, and corn fodder). The manure is temperature monitored (between 130°-150°) over a 16-week period before placed in consumer bags. Daily measurements are taken. Fabric covers are used to cover the material during composting to insure desirable moisture levels. This procedure ensures a high quality compost.



- Bulk Available -
Call for Information



Spring is a good time to apply compost to feed soil, gardens, lawns, flower beds, shrubs, fruit trees, strawberries, asparagus, green houses, and more.

HOW AMAZING IS IT THAT THE SAME GOD THAT CREATED THE MOUNTAINS, OCEANS AND GALAXIES LOOKED AT YOU AND THOUGHT THE WORLD NEEDS ONE OF YOU TOO.

90" CHEATER QUILT TOPS

New Colors & Patterns

- Log Cabin Navy
- Lone Star Brown
- Log Cabin Rose Black
- Double Wedding Ring Blue
- DWR Brown Lavendar
- DWR Hunter
- Foulard Aqua
- Dahlia Navy
- Bear Claw Burgundy
- Drunkard's Path Black
- Dresden Black
- Dresden Navy

SEW BASIC DRESSES

Girls Dress Patterns in Sizes 1-8



sew.
basic
dresses

Coming Soon
in larger sizes

MARCH SAVINGS
SAVE \$1.00 PER BAG
Incred-A-Soil

32lb. Bag - All Natural Plant Food
\$7.95/bag or \$7.50/bag
if 5 or more are purchased

Must present coupon. Expires April 25, 2017

APRIL SAVINGS
50% OFF
Quilt Book or Pattern

of your choice
- Limit 1 (one) per Customer -

Must present coupon. Valid April 1-29, 2017

MAY SAVINGS
Empty Bolt of Your Choice
15% OFF

Entire Piece
- Limit 1 (one) per Customer -

Must present coupon. Valid May 1-31, 2017

BLOCK-OF-THE-MONTH

GETTING TO KNOW HUE

Designed by Nancy Rink
for Marcus Fabrics



- 12 month program
- 96"x102"
- Begins February 2017

Sign-up Now!

BLOCK-OF-THE-MONTH

TONGA FOREST FLOOR

Designed by Wing and a Prayer Design
for Timeless Treasures



- 9 month program
- 106"x106"
- Begins February 2017

Sign-up Now!

CHINA DINNER WARE SETS

NEW

3 Patterns - 45 Piece Set

Dinner Plate & Vegetable Bowl - Open Stock



Serafina



Millicent



Philomena

FOLD OVER BUNDLES

Bundles include 4 coordinating / yd cuts

- Great as a jump start on picking colors for your next project



WHAT IS ASCENSION DAY?
A QUESTION OFTEN ASKED.
REFERENCE KJV
MARK 16:19, LUKE 24:50-53,
AND ACT 1:9-11

"This Moment"

I may never see tomorrow, there is no written guarantee.
And things that happened yesterday, belong to history.
I cannot predict the future, I cannot change the past.
I just have this present moment, I must treat it as my last.
I must use this moment wisely, for it will soon pass away.
And be lost to me forever as part of yesterday.
I must exercise compassion, help the fallen to their feet.
Be a friend unto the friendless, make an empty life complete.
The unkind things I do today, may never be undone.
And the friendship that I fail to win, may never more be won.
I may not have another chance, on bended knees to pray.
And thank God with humble heart for giving me this day!

Classes by Joanne

CARNIVAL

This quilt is perfect for those large print or specialty fabrics we love, but don't know how to use! You can go scrappy with the background fabric or choose to use a single fabric. The choice is yours. Construction is simple, so making this 69"x83" quilt is quick and easy.

Tuesday, April 11th
10am-3pm
\$30.00 plus pattern



STRIP TUBE CHEVRON

Everybody loves chevrons but hate sewing all those triangles. This fast and fun quilt is made using the strip tube technique instead of the typical half square triangle method, and you'll be amazed how quick and accurately it comes together! The pattern includes instructions for five size options and how to use the Strip Tube Ruler, which is recommended but not required.

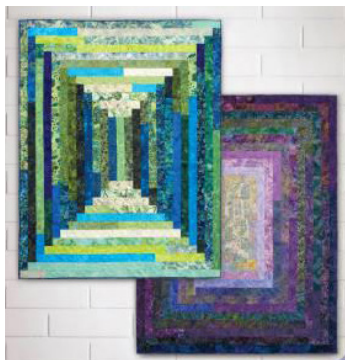
Saturday, April 22nd
10am-2:30pm
\$30.00 plus pattern



RADIANT LOGS

2 1/2" strips are all that is needed to create this colorful quilt that seems to radiate from the center out. Adding or subtracting the number of strips is all that it takes to reduce or enlarge the size of this quilt.

Tuesday, May 9th
10am-3pm
\$30.00 plus pattern



STITCHED

One pattern, one simple block, two lay out options! Whether you choose to make your blocks scrappy or more "controlled," the construction is the same. The magic occurs when the blocks are put together. The pattern includes information for four size options; and in class, you'll be provided information for border options.

Tuesday, May 16th
10am-3pm
\$30 plus pattern



FAITH, HOPE, LOVE

Celebrate your belief in Faith, Hope, and Love with this simple 42"x21" wall hanging. (Or make three individual wall hangings that measure 14"x21" each.) In the first class, you'll learn how to cut out the shapes and machine applique them to the back-ground. In the second class, you'll layer and begin quilting the wall hanging, and we'll discuss your binding options.

This is a two-part class.

Saturday, May 27th and
Saturday, June 3rd
10am-2:30pm
\$35 plus pattern



SIT AND SEW - BYOP (BRING YOUR OWN PROJECT)

Bring a project (or two) of your own choosing and get some serious work done on it. There is always lots of sewing, laughter, and fellowship so come join the fun!

Wednesday, April 12th or Wednesday, May 17th
10am-4pm
\$30

Classes by Cathy

BEGINNING APPLIQUE QUILTED PICTURE

This 12"x12" applique block can be finished as a wall hanging or framed for a wonderful accent for your home. This class is designed to teach the basics of needle turn applique.

Saturday, May 20th
10:30am-12:30pm
\$20.00



WOOL PIN CUSHION

This is a make-it-take-it workshop. All (but stuffing the pincushion) will be accomplished in this class. Perfect for those who would like to try wool applique to see if they love it. They also make great Christmas gifts!

Thursday, March 16th
5-7pm
\$20.00

JUST QUILTING

So you finished that quilt top, now what? This class will teach you how to hand quilt it by making a pillow top. From making the top, basting and layering, the quilting stitch and Tennessee Waddling, you'll learn everything you need to know to do any size quilt.

Tuesday, April 20th
4:30-7pm
\$20.00

BALTIMORE ALBUM APPLIQUE

The ultimate Antebellum Quilt! Come take a historical quilt journey and create a masterpiece! It is easier than you think! Learn needle turn and freezer paper applique, folded roses ruching, a variety of flowers, ink work and shading, and lots of embellishment techniques. This is a 12 session class with Elly Sienkiewicz's book "Beloved Baltimore Album Quilts" as our guide.

Saturdays, March 11th, April 1st, and May 6th
10:30am-12:30pm
\$20.00 each session



AMERICAN QUILT BLOCK - OHIO

Construct this 15" block (using hand or fusible applique method) that contains the nature symbols of Ohio – the cardinal, scarlet carnation, ladybug, paw paw, and of course - the buckeye. Then use it as the center of an Ohio quilt, frame it or do the other blocks in the series American Album Blocks to complete a quilt or just some of the states you have visited to make a travel quilt!

Saturdays, May 22nd and May 27th
10:30am-1pm
\$20.00 each session



COMING THIS SUMMER FLAGS OF THE AMERICAN REVOLUTION

Designed by Jan Patek and taught by Cathy
Reserve your space now!



Classes by Laura

STEPPING STONES

This Quiltworx paper-piecing pattern is fun and a good "starter" for anyone who wants to try to make a Judy Neimeyer quilt. The blocks go together quickly and you can use them to make a quilt or placemats and a table runner. Pick up your pattern and supply list when you sign up at the store.

Fridays, March 10th and March 31st
9:30am-3pm
\$60.00 plus pattern



SUMMER SOLSTICE

This stunning star can be made in many different colorways. Pick up your supply list when you sign up at the store.



Tuesdays, April 4th, April 18th, and May 2nd
9:30am-3pm
\$90.00 plus pattern